

The Ancient Tree Hunt

Join the Woodland Trust in an amazing voyage of discovery to track down some of the oldest living things on earth, lying forgotten in towns, parks and countryside. The Ancient Tree Hunt team needs your help to discover these forgotten tree treasures all around the UK.

Winter is prime tree hunting time for ancient trees, because they are often the fattest, squattest or gnarliest of their species within your local landscape. Their silhouettes stand out from all the other trees, just begging to be recorded at www.AncientTreeHunt.org.uk

And to help you put them on the map, we have created an ingenious measuring device – this knitted ‘British Standard Hug’ scarf!

This pattern is designed to be the same length as a British Standard Hug (1.5 metres) and will help you measure trees whilst out and about this winter. It will help you hone your knitting skills, keep you cosy and make you highly fashionable as it’s an original piece designed specifically for the Ancient Tree Hunt by London-based knitwear designer Laura Long.

About the artist

Brought up in Brighton surrounded by antique shops and dressed in jumpers made by her grandmother, Laura Long developed a love for traditional crafts and collecting vintage treasures.

A 1st class honours degree in textiles at Central St Martins combined with time spent in Ireland working with fashion designer John Rocha, enabled Laura to explore and develop a love of traditional Irish crafts. From lace making and crochet to Aran knitting and knot work, the fascinating stories and history behind each craft never cease to inspire her.



Ancient Trees are as distinctive as UK fashion and a vital element of the UK’s hedgerows and landscapes. Help us create the most comprehensive map of our fat, old trees whilst you get to knit your own designer ‘British Standard Hug’ scarf.

What trees to look out for in the landscape and hug sizes for helping you spot the ancient ones

How many hugs make an ancient?

- Oak** – 3 scarves/4.5m
- Beech** – 2 scarves/3m
- Scots Pine** – 2 scarves/3m
- Rowan** – 1 scarf/1.5m
- Birch** – 1 scarf/1.5m
- Hawthorn** – 1 scarf/1.5m
- Field maple** – 1 scarf/1.5m
- Sweet chestnut** – 4 scarves/6m
- Ash** – 2 scarves/3m



These sheets have been designed to be shared. Feel free to photocopy. The Woodland Trust is the UK’s leading woodland conservation charity dedicated to the protection of our native woodland heritage. www.woodlandtrust.org.uk www.AncientTreeHunt.org.uk



The Ancient Tree Hunt

STRIPY SCARF

Cast on 32 stitches in green yarn

K 4 rows

Change to orange yarn.

Row 5: K

Row 6: k4, p24, k4

Rep rows 5 and 6, five times (10 rows)

Change to green yarn.

K 4 rows

Change to red yarn.

Row 19: K

Row 20: k4, p24, k4

Rep rows 19 and 20, five times (10 rows)

Change to green yarn.

K 4 rows

Continue in this way for 1.5 metres.

The colour sequence is: orange, red, cerise, maroon, cerise, red, orange with 4 rows of green between each colour.

Sew in ends as you go along to save time at the end.



Equipment needed:

5mm needles

Yarn: recommend pure wool DK

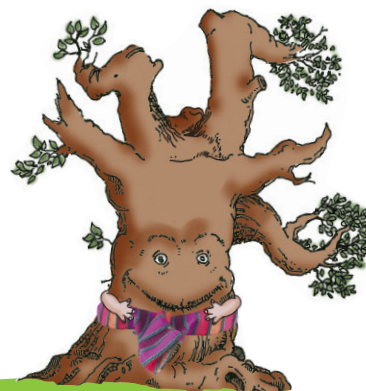
30 grams – yarn A – green (2 strands of yarn knitted together)

25 grams – for each of the stripes (orange – red – cerise – maroon – cerise – red – orange)

Abbreviations:

k = knit

p = purl



These sheets have been designed to be shared. Feel free to photocopy.

The Woodland Trust is the UK's leading woodland conservation charity dedicated to the protection of our native woodland heritage. www.woodlandtrust.org.uk www.AncientTreeHunt.org.uk