

The Ancient Tree Hunt

Join the Woodland Trust in an amazing voyage of discovery to track down some of the oldest living things on earth, lying forgotten in towns, parks and countryside. The Ancient Tree Hunt team needs your help to discover these forgotten tree treasures all around the UK.

Winter is prime tree hunting time for ancient trees, because they are often the fattest, squattest or gnarliest of their species within your local landscape. Their silhouettes stand out from all the other trees, just begging to be recorded at www.AncientTreeHunt.org.uk

And to help you put them on the map, we have created an ingenious measuring device – this knitted ‘British Standard Hug’ scarf!

This pattern is designed to be the same length as a British Standard Hug (1.5 metres) and will help you measure trees whilst out and about this winter. It will help you hone your knitting skills, keep you cosy and make you highly fashionable as it’s an original piece designed specifically for the Ancient Tree Hunt by London-based knitwear designer Laura Long.

About the artist

Brought up in Brighton surrounded by antique shops and dressed in jumpers made by her grandmother, Laura Long developed a love for traditional crafts and collecting vintage treasures.

A 1st class honours degree in textiles at Central St Martins combined with time spent in Ireland working with fashion designer John Rocha, enabled Laura to explore and develop a love of traditional Irish crafts. From lace making and crochet to Aran knitting and knot work, the fascinating stories and history behind each craft never cease to inspire her.



Ancient Trees are as distinctive as UK fashion and a vital element of the UK’s hedgerows and landscapes. Help us create the most comprehensive map of our fat, old trees whilst you get to knit your own designer ‘British Standard Hug’ scarf.

What trees to look out for in the landscape and hug sizes for helping you spot the ancient ones

How many hugs make an ancient?

- Oak** – 3 scarves/4.5m
- Beech** – 2 scarves/3m
- Scots Pine** – 2 scarves/3m
- Rowan** – 1 scarf/1.5m
- Birch** – 1 scarf/1.5m
- Hawthorn** – 1 scarf/1.5m
- Field maple** – 1 scarf/1.5m
- Sweet chestnut** – 4 scarves/6m
- Ash** – 2 scarves/3m



These sheets have been designed to be shared. Feel free to photocopy. The Woodland Trust is the UK’s leading woodland conservation charity dedicated to the protection of our native woodland heritage. www.woodlandtrust.org.uk www.AncientTreeHunt.org.uk

The Ancient Tree Hunt

LEAF SCARF

Cast on 41 stitches in yarn A (main colour)

Moss stitch for 10 rows

With right side facing follow chart (see next page):

Row 1: Moss stitch 5; k21; moss stitch 5.

Row 2: Moss stitch 5; p31; moss stitch 5.

Row 3: Moss stitch 5; K14; change colour (yarn B); k3 change back to colour A (using a new ball) k14; moss stitch 5.

Row 4: Moss stitch 5; p14; change colour (yarn B) p3 change back to colour A (using original ball) p14; moss stitch 5.

Repeat rows 3 & 4 twice more ending on a p row.

Row 9: Moss stitch 5; k13; k5 (yarn B); k13 (yarn A); moss stitch 5.

Row 10: Moss stitch 5; p12; p7 (yarn B); p12 (yarn A); moss stitch 5.

Row 11: Moss stitch 5; K11; k9 (yarn B); k11 (yarn A); moss stitch 5.

Row 12: Moss stitch 5; p10; p11 (yarn B); p10 (yarn A); moss stitch 5.

Row 13: Moss stitch 5; k9; k13 (yarn B); k9 (yarn A); moss stitch 5.

Row 14: Moss stitch 5; p8; p15 (yarn B); p8 (yarn A); moss stitch 5.

Row 15: Moss stitch 5; k13; k15 (yarn B); k13 (yarn A); moss stitch 5.

Row 16: Moss stitch 5; p7; p17 (yarn B); p7 (yarn A); moss stitch 5.

Row 17: Moss stitch 5; k7; k17 (yarn B); k7 (yarn A); moss stitch 5.

Row 18: Moss stitch 5; p6; p19 (yarn B); p6 (yarn A); moss stitch 5.

Row 19: Moss stitch 5; k6; k19 (yarn B); k6 (yarn A); moss stitch 5.

Row 20: Moss stitch 5; p6; p19 (yarn B); p6 (yarn A); moss stitch 5.

Row 21: Moss stitch 5; k5; k21 (yarn B); k5 (yarn A); moss stitch 5.

Row 22: Moss stitch 5; p5; p21 (yarn B); p5 (yarn A); moss stitch 5.

Repeat rows 21 & 22.

Row 25: Moss stitch 5; k6; k19 (yarn B); k6 (yarn A); moss stitch 5.

Row 26: Moss stitch 5; p6; p19 (yarn B); p6 (yarn A); moss stitch 5.

Row 27: Moss stitch 5; k6; k19 (yarn B); k6 (yarn A); moss stitch 5.

Row 28: Moss stitch 5; p7; p17 (yarn B); p7 (yarn A); moss stitch 5.

Row 29: Moss stitch 5; k7; k17 (yarn B); k7 (yarn A); moss stitch 5.

Row 30: Moss stitch 5; p8; p15 (yarn B); p8 (yarn A); moss stitch 5.

Row 31: Moss stitch 5; k8; k15 (yarn B); k8 (yarn A); moss stitch 5.

Row 32: Moss stitch 5; p9; p13 (yarn B); p9 (yarn A); moss stitch 5.

Row 33: Moss stitch 5; k10; k11 (yarn B); k10 (yarn A); moss stitch 5.

Row 34: Moss stitch 5; p11; p9 (yarn B); p11 (yarn A); moss stitch 5.

Row 35: Moss stitch 5; k12; k7 (yarn B); k12 (yarn A); moss stitch 5.

Row 36: Moss stitch 5; p13; p5 (yarn B); p13 (yarn A); moss stitch 5.

Row 37: Moss stitch 5; k14; k3 (yarn B); k14 (yarn A); moss stitch 5.

Row 38: Moss stitch 5; p31; moss stitch 5.

These 38 rows form the pattern. Continue until 11 leaves have been knitted (about 1.5 metres), changing the leaf colour along the scarf while keeping background colour **green** throughout. Repeat rows 1 and 2 and finish with 10 rows of moss stitch in colour A.



Equipment needed:

4mm needles

Yarn: recommend pure wool DK

50 grams – yarn A (main colour)

15 grams – yarn B for each of the leaves (orange – red – cerise – maroon – cerise – red – orange)

Abbreviations:

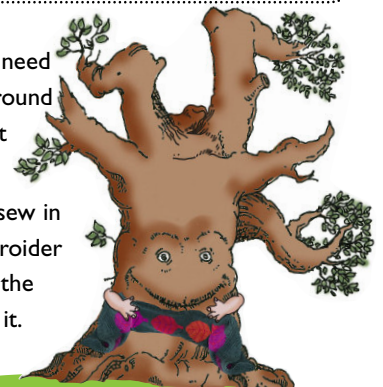
k = knit

p = purl

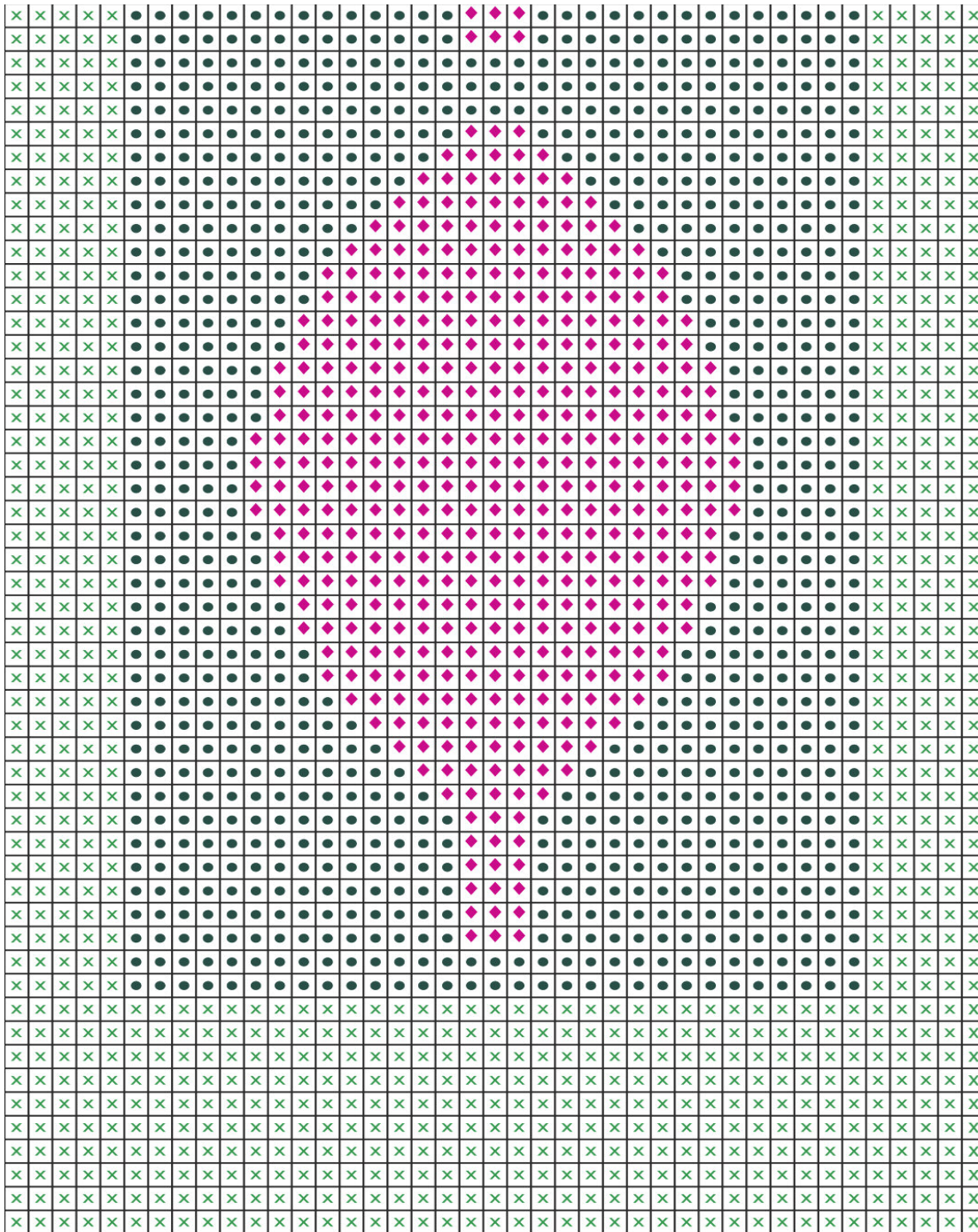
X moss stitch = This is a pattern created by alternately working one knit stitch and one purl stitch on every row. The purl stitch is worked over the knitted stitch on the subsequent row.

The yarns form the green background and the leaves need to be 'wrapped' (twisted around one another to form a neat leaf edge).

When the scarf is knitted, sew in any loose threads and embroider veins on to each leaf using the colour of the leaf ahead of it.



The Ancient Tree Hunt



These sheets have been designed to be shared. Feel free to photocopy.
The Woodland Trust is the UK's leading woodland conservation charity dedicated to the protection of our native woodland heritage. www.woodlandtrust.org.uk www.AncientTreeHunt.org.uk

